



R10M/R11M Service Parts and Maintenance

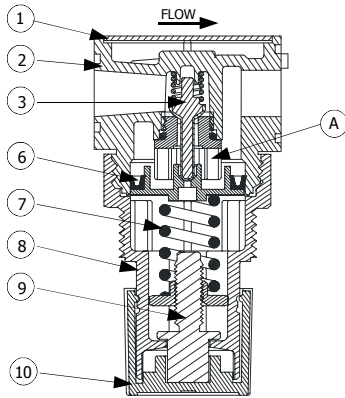
MASTER PNEUMATIC - DETROIT, INC.

6701 -18 Mile Rd. | Sterling Heights, MI 48314 | Phone: (586) 254-1000 | Fax: (586) 254-6055 | Email: mp@masterpneumatic.com

Replacement Parts & Kits

R10M Section View

(Piston Regulator)



THANK YOU!

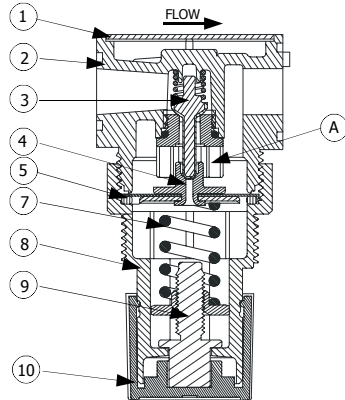
You have just purchased a quality Regulator from Master Pneumatic.

With care in it's installation and maintenance, you can expect it to have a long and economical service life. Before you go any further, please take a few minutes to look over this information, then save it for future reference and for the useful service information it contains.

KEY	DESCRIPTION	R10M	R11M
1	Cover	10R-15	10R-15
2	Head	10R-01M	10R-01M
3	Valve Assembly Kit	A33-532	A33-532
4	Diaphragm Assembly		A33-534
5	Spacer		10R-08
6	Piston Assembly Kit	A33-544	
7	Main Spring	33-104	33-104
8	Dome	10R-02	10R-02
9	Adjustment Screw Assembly	A33-75	A33-75
10	Knob	10R-62	10R-62

R11M Section View

(Diaphragm Regulator)



Installation Procedures

INSTALLATION:

Depressurize and lockout air pressure. Install the regulator in air line as near as possible to the device it is to serve, following the arrow direction on regulator head for air flow. Filters should be installed immediately ahead of the regulator to insure a supply of clean air. Units should be installed before any lubricators or valves in the air line. Install a pressure gauge or plug the gauge ports.

ADJUSTMENTS & MAINTENANCE:

Clockwise turning of the adjusting knob (#10) will increase the secondary pressure. Push up on adjusting knob (#10) to lock. If the air supply is kept clean, the regulator should provide long periods of uninterrupted service. Erratic operation or loss of regulation is normally due to dirt or a leaking seal.

REPAIR:

To clean or repair the unit, depressurize and lockout air pressure. Reduce spring load to zero by turning adjusting knob counterclockwise. The dome (#8) can be removed by turning it counterclockwise. The piston (#6) or diaphragm assembly (#4) can now be removed. The valve (#3) can be removed by unscrewing valve seat (A). If regulator cannot be repaired by cleaning, the operating parts should be replaced. When the regulator is reassembled, make sure all seals are correctly located. The valve seat is torqued to 3-5 in-lbs, do not over tighten. The dome is torqued to 60-70 in-lbs.

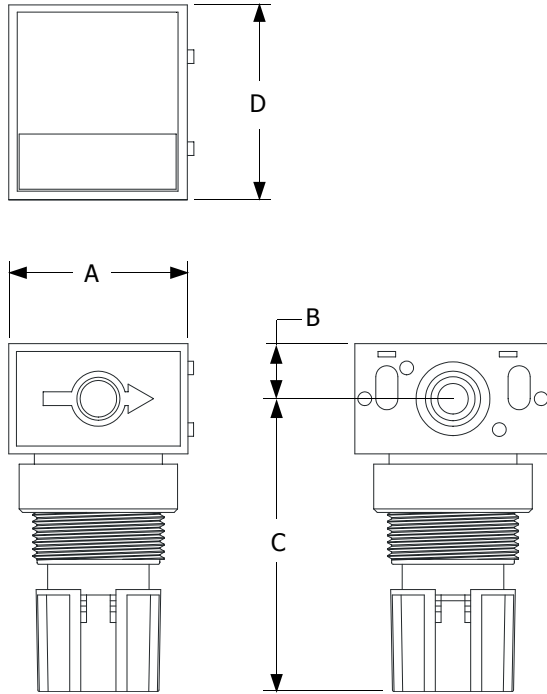


R10M/R11M Service Parts and Maintenance

MASTER PNEUMATIC - DETROIT, INC.

6701 -18 Mile Rd. | Sterling Heights, MI 48314 | Phone: (586) 254-1000 | Fax: (586) 254-6055 | Email: mp@masterpneumatic.com

Dimensional Specifications



KEY	R10M	R11M
A	1 5/8 (41 mm)	1 5/8 (41 mm)
B	1/2 (13 mm)	1/2 (13 mm)
C	2 5/8 (68 mm)	2 5/8 (68 mm)
D	1 25/32 (45 mm)	1 25/32 (45 mm)

KIT NUMBER	DESCRIPTION
A33-82	Panel Mount Nut & Bracket
10R-26	Panel Mount Nut

General Specifications

MAXIMUM INLET PRESSURE: 150 PSI (10.3 bar)

MAXIMUM TEMPERATURE: 125 °F (51.7 °C)

ADJUSTING RANGE:

- Standard Range: 0-100 psig (0-6.9 bar)
- 'H' Option Spring: 0-125 psig (0-8.6 bar)
- 'L' Option Spring: 0-50 psig (0-3.4 bar)
- 'L8' Option Spring: 0-8 psig (0-0.6 bar)
- 'L15' Option Spring: 0-15 psig (0-1.0 bar)
- 'L30' Option Spring: 0-30 psig (0-2.1 bar)

AVAILABLE OPTIONS

- A Non-Relieving
- C Small valve seat
- H High pressure spring 0-125 psi (0-8.6 bar)
- L Low adjusting spring 0-50 psi (0-3.4 bar)
- L8 Low adjusting spring 0-8 psi (0-0.6 bar)
- L15 Low adjusting spring 0-15 psi (0-1.0 bar)
- L30 Low adjusting spring 0-30 psi (0-2.1 bar)
- MV Tamper-resistant Knob & pressure limit = *
- V Viton seals

- P Plastic Panel mount nut
- PN Metal Panel mount nut
- G 0-160 psi gauge (0-11.0 bar)
- W BSP British (Whitworth) threads